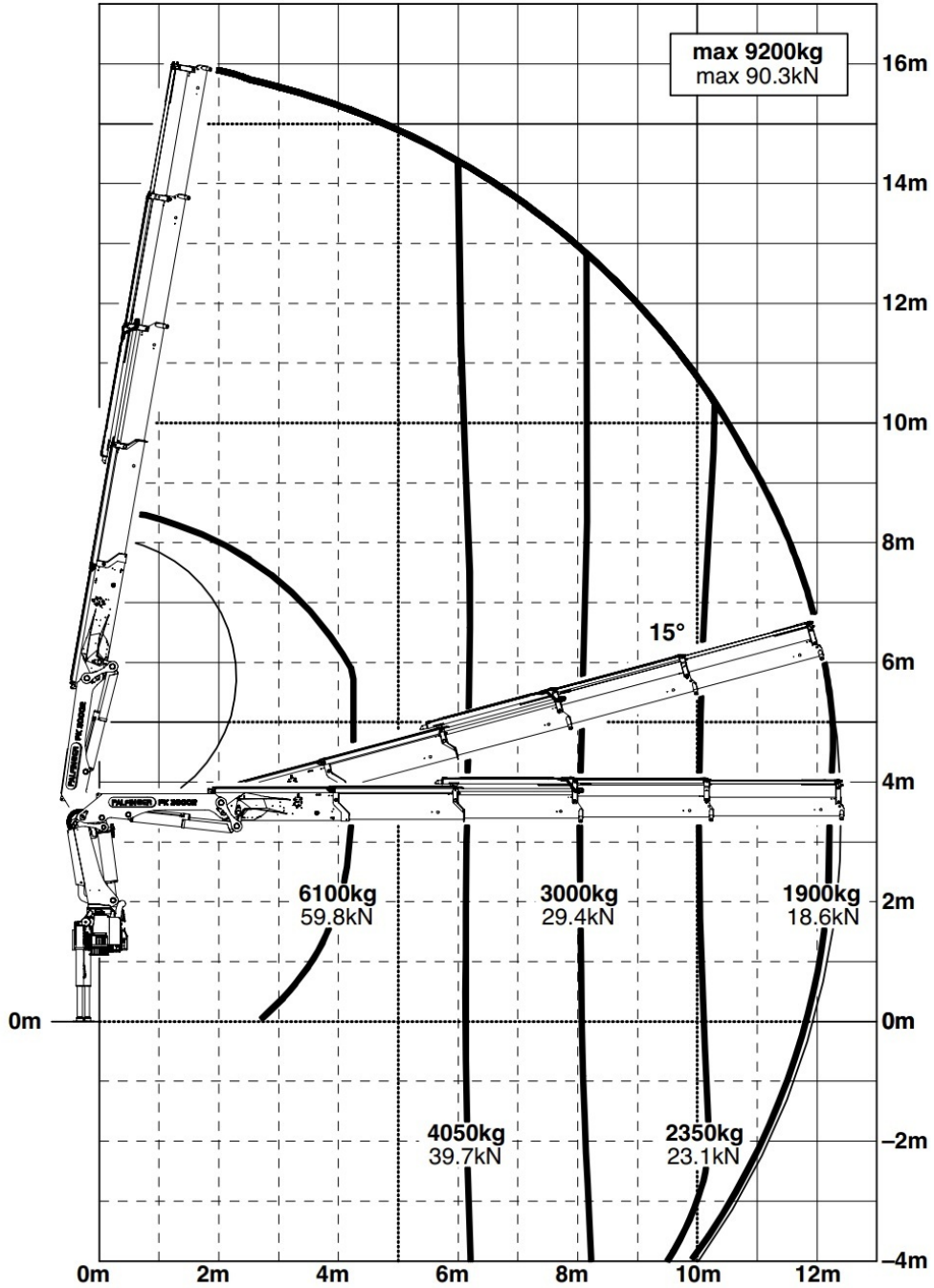


PK 30002

C



max.		9200 kg	20280 lbs
4.2 m	13' 9"	6100 kg	13500 lbs
6.1 m	20' 0"	4050 kg	9000 lbs
8.0 m	26' 3"	3000 kg	6600 lbs
10.1 m	33' 2"	2350 kg	5100 lbs
12.2 m	40' 0"	1900 kg	4200 lbs

C