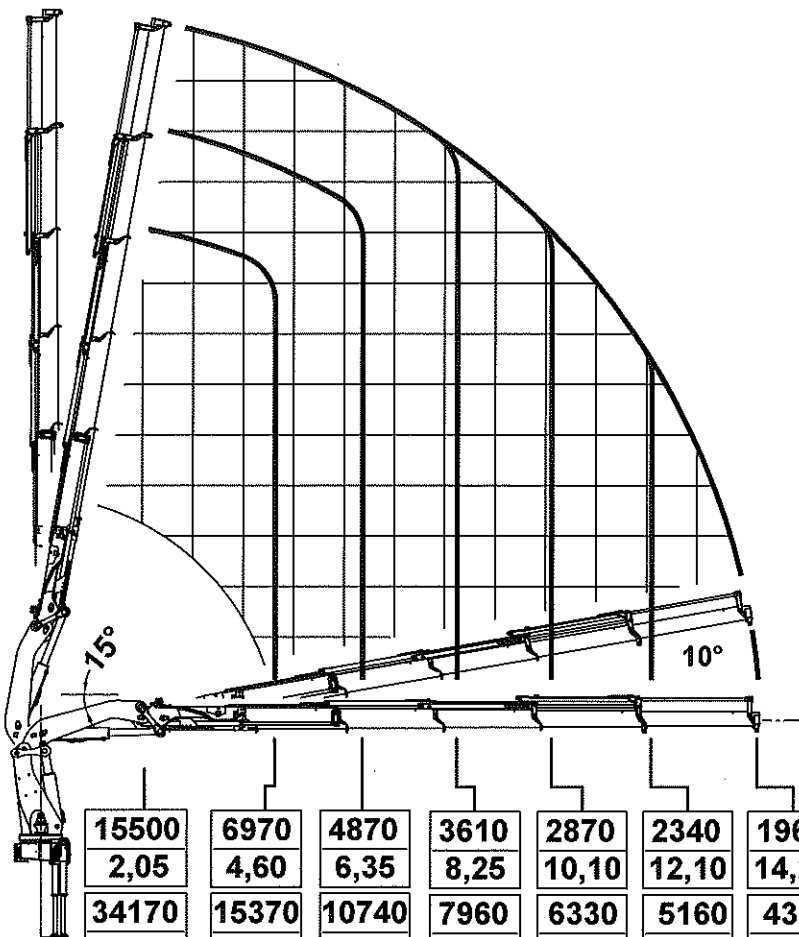


0ft 5 10 15 20 25 30 35 40 45 50 55 60

19  
18  
17  
16  
15  
14  
13  
12  
11  
10  
9  
8  
7  
6  
5  
4  
3  
2  
1  
0m



0m 1 2 3 4 5 6 7 8 9 10 11 12 13 14 15 16 17

# 360.5

65  
60  
55  
50  
45  
40  
35  
30  
25  
20  
15  
10  
5  
0ft

PITS60 J3

\* OPT

1100	990	860	735	Kg
17,00	18,60	20,15	21,70	m
2430	2180	1900	1620	lbs
55'9"	61'0"	66'1"	71'2"	ft

PIQS60 J4

\* OPT

1040	930	800	675	580	Kg
17,10	18,65	20,25	21,80	23,45	m
2290	2050	1760	1430	1280	lbs
56'1"	61'2"	66'5"	71'6"	76'11"	ft

15500	6970	4870	3610	2870	2340	1960	Kg
2,05	4,60	6,35	8,25	10,10	12,10	14,20	m
34170	15370	10740	7960	6330	5160	4320	lbs
6'9"	15'1"	20'10"	27'1"	33'2"	39'8"	46'7"	ft



H1-B3

